



Tatra

Australia

Proudly presents

KOBIT

S.I.O.

stroje pro údržbu a opravy silnic



**A selection of KOBIT superstructures:
Service Modules, Water Carts & Fuel Tankers**

10x10 FUEL TANK MODULE CN29K-2

This fuel tank module is designed for filling and transporting diesel with a maximum loading capacity of 28,000L. (+5% for vapour) It has a stainless steel tank with concave baffles, and is completely insulated.

TECHNICAL DATA

Tank volume	29,000L
Cover of insulations	.06mm thick
2 chambers for diesel	2x 14,500L
Each chamber has 2x wave breaks (baffles) crossing and 6x baffles length ways	
Body unladen weight	Approx 9,000kg
Aluminium alloy pipe AIMg4, 5Mn W32 DN3" and DN"2	

WEIGHTS

Kerb Weight	21,000 kg
Payload	31,000 kg
Total Weight	52,000 kg

DIESEL

Standard flow from 60 to 480 l p/min

The discharge nozzle which comes with hydraulically wound aluminium drum hose reel (Wiggins Quick Fill), with adjustable flow rate of 60-480 l p/min.

Low volume gun comes with 1" DN fitting – 15m long, automatically released pistol (flow max. 120 l p/min)

Hydraulically wound aluminium drum hose reel, grip with swivel 1½" hose – 15-m long, automatically released pistol grip 1½" including a swivel joint (flow max 300 l p/min)

Mechanical counter PRECIMA 500X with mechanical printer-maximum discharge capacity up to 480 l p/min.

TANK EQUIPMENT

Inspection covers can be removed for inspection if required

Foot valve DN 100

Safety valve and non-discharging valve

Sensor for bottom loading

Control of foot valves – pneumatically operation

FILLING/DISCHARGING UNIT FUNCTIONS

Bottom loading

Discharge through counter for two separate winders (Low/high flow filling)

ADDITIONAL EQUIPMENT

Higher flow rate pumps and reels can be fitted

2 x Fire extinguisher box including 6kg extinguisher

Under all reeled-up drums is a trough with an empty connection for waste oil suction to chamber

Plastic mudguards

Filter cupboards

1 x box for tools and filters

2 x Work lights in rear cabinet

4 x External working lights

1 x Earth cable – 15 m

Pressure test for the tank body from TÜV SÜD CZ s.r.o.

2 x lift system for loading and unloading two spare wheels (Hydraulic)

Operation instructions and technical instructions

Optional Telma Retarder

ROPS fitted according to standard AS 2294.2

*Drawings and more information available

*Designs can be modified to customers request

Vehicle operation can be further limited by local regulations
Manufacturer reserves the right to modify vehicles without a prior notice

www.tatratrucks.com.au

14/1/09

FROM

OFFROAD TRUCKS AUSTRALIA PTY LTD

ABN 12 091 646 481 DL 16670

HEAD OFFICE & SHOWROOM

25 Garnet Way (Cnr Eva St)
MADDINGTON WA 6109
PO Box 342
FORRESTFIELD WA 6058
T:(08) 9459 8911
F:(08) 9459 8966



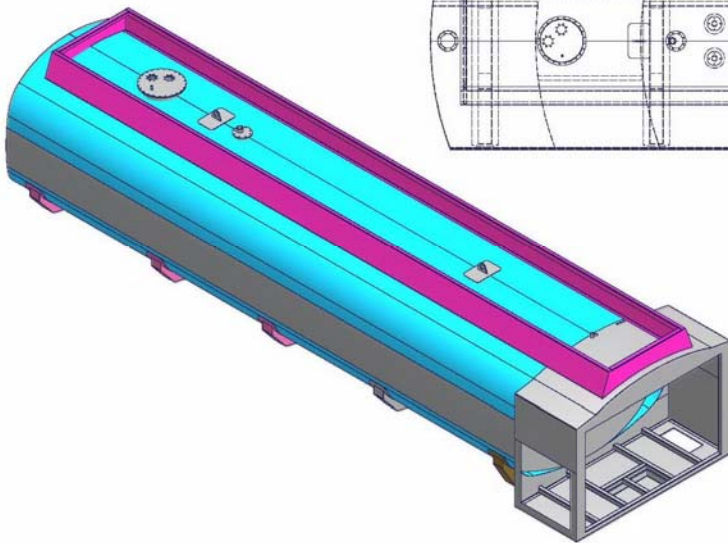
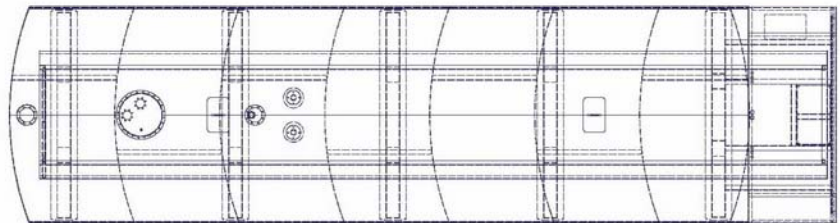
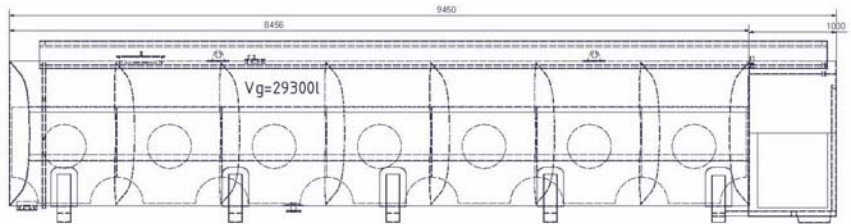
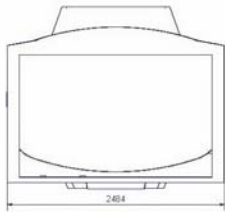
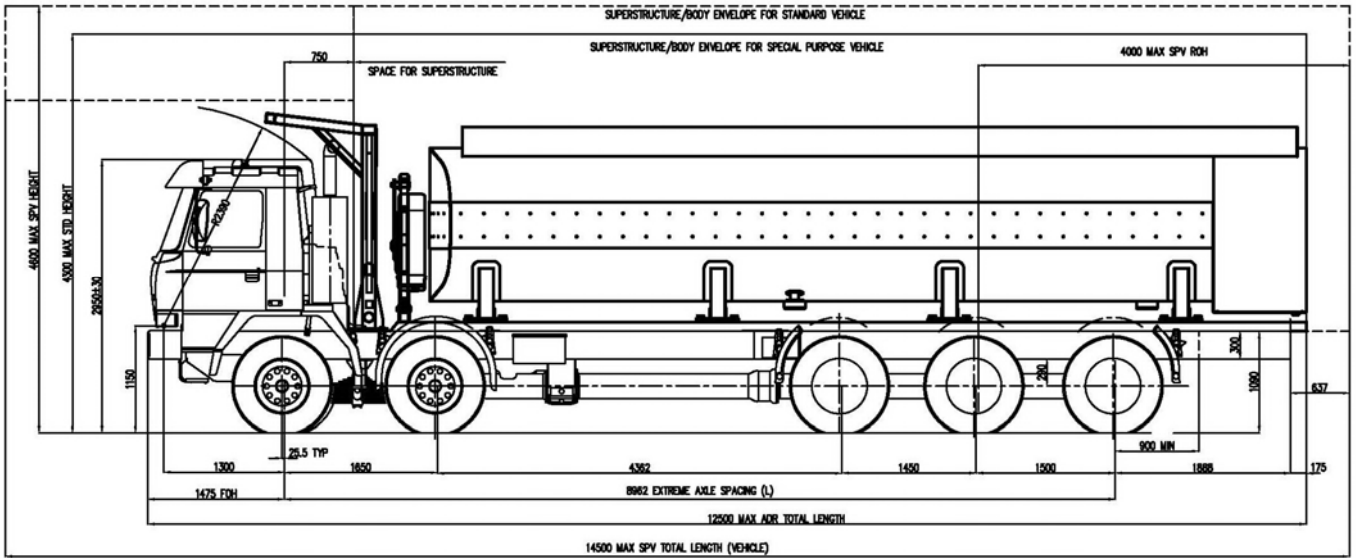
E: tatra@offroadtrucks.com.au

QLD BRANCH

546 Boundary Road
ARCHERFIELD QLD 4108

T:(07) 3274 4666
F:(07) 3274 2411

10x10 FUEL TANK MODULE CN29K-2



10x10 SERVICE MODULE CSN20/7K

This service module is designed for filling and transporting diesel and other oils, and has a maximum loading capacity of 20,000L. It has a stainless steel tank with concave baffles, and is completely insulated.

TECHNICAL DATA

Tank volume	20,800L (2x Chambers 10,400L)
Cover of insulations	.06mm thick
Insulation of tank body outside (optional)	100mm
4 chambers for oil	4x 600L
1 chamber for waste oil	1x 1,200L
1 chamber for water	1x 200L
1 chamber for coolant	1x 550L
Body unladen weight	Approx 10,000kg

WEIGHTS

Kerb Weight	22,000 kg
Payload	30,000 kg
Total Weight	52,000 kg

DIESEL

Standard flow from 60 to 480 l p/min

The discharge nozzle which comes with hydraulically wound aluminium drum hose reel (Wiggins Quick Fill), with adjustable flow rate of 60-480 l p/min.

Low volume gun comes with 1" DN fitting – 15m long, automatically released pistol (flow max. 120 l p/min)

Hydraulically wound aluminium drum hose reel, grip with swivel 1½" hose – 15-m long, automatically released pistol grip 1½" including a swivel joint (flow max 300 l p/min)

Mechanical counter PRECIMA 500X with mechanical printer-maximum discharge capacity up to 480 l p/min.

TANK EQUIPMENT

Inspection covers can be removed for inspection if required (Optional)

Foot valve DN 100

Safety valve and non-discharging valve

Sensor for bottom loading

Control of foot valves – pneumatically operation

All reels are located in the rear part of the tank body

FILLING/DISCHARGING UNIT FUNCTIONS

Bottom loading

Discharge through counter for two separate winders (Low/high flow)

OILS

4x 15m long reels with spring return reel

Dimension DN 20 mm (3/4") with spring return reel

Pump – flow approx. from 5 – 15l/min

WASTE OILS

Reel 15m long with spring return reel

Dimension DN ½", connection only screw for ½"

Rotary Pump for empty and suction – flow approx. 20 - 150 l/min.

Has a vacuum pump capable of up to 500L/min

COOLANT

Reel 15m long with spring return reel

Pump – flow is adjustable as required

Optional flow metre gun for discharging

WATER

Hose reel 15m long-max flow is 120L/min (3 bar)

PRESSURE OPERATION GREASE

Pneumatic operation

Grease 2x 200kg

Grease press equipment operated by pneumatic system (Auxiliary air compressor is PTO driven)

15m grease reel situated in rear part of tank body with spring return reel

ADDITIONAL EQUIPMENT

Under all reels is a drain tray that can be cleaned out with the E-Vac system

PTO driven hydraulic circuit including pump of 35L with pressure 160 bar for operation following:

- power for pump for diesel
- power for compressor (compressor has capacity – 100 PSI/approx. 8,1 bars)
- power for rotary pump for empty and suction waste oil
- power for rotary pump for discharging clean oil
- power for pump discharging coolant

Plastic mudguards

Doors – system open and door by pneumatic struts

Filter cupboards

1 x box for tools and filters

2 x Work lights in rear cabinet

4 x External working lights

1 x Earth cable – 15 m

Pressure test for the tank body from TÜV SÜD CZ s.r.o.

Operation instructions and technical instructions

Optional Telma Retarder

ROPS fitted according to standard AS 2294.2

*Drawings and more information available

*Designs can be modified to customers request

Vehicle operation can be further limited by local regulations

Manufacturer reserves the right to modify vehicles without a prior notice

www.tatratrucks.com.au

14/1/09

FROM

OFFROAD TRUCKS AUSTRALIA PTY LTD

ABN 12 091 646 481 DL 16670

HEAD OFFICE & SHOWROOM

25 Garnet Way (Cnr Eva St)

MADDINGTON WA 6109

PO Box 342

FORRESTFIELD WA 6058

T:(08) 9459 8911

F:(08) 9459 8966



E: tatra@offroadtrucks.com.au

QLD BRANCH

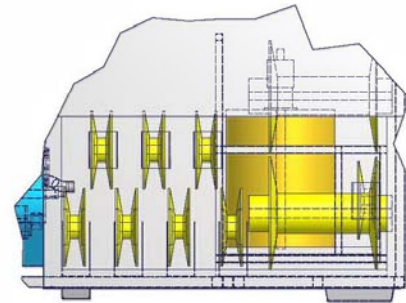
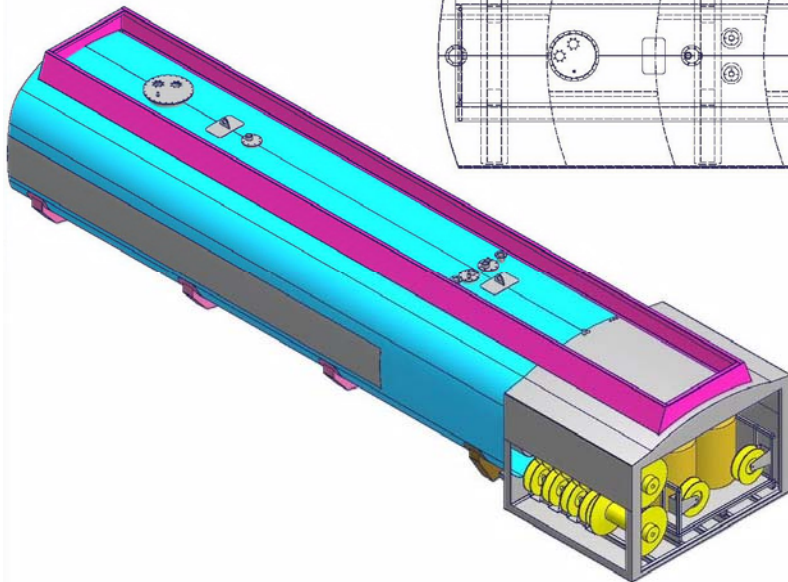
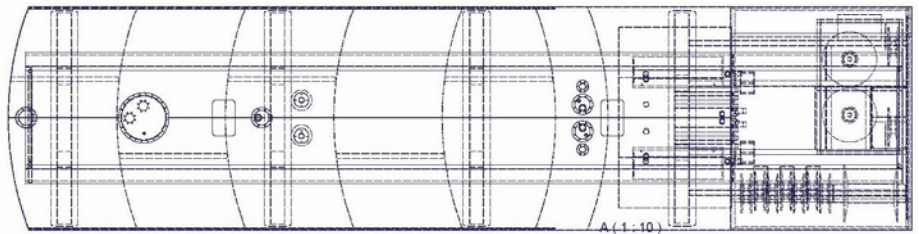
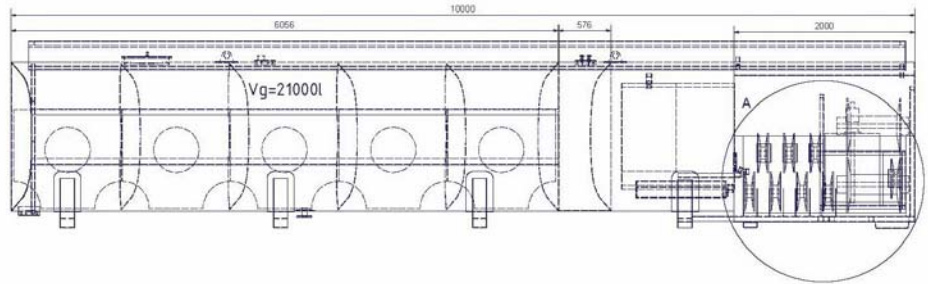
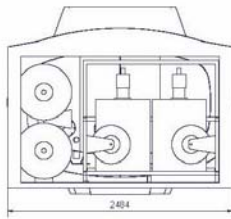
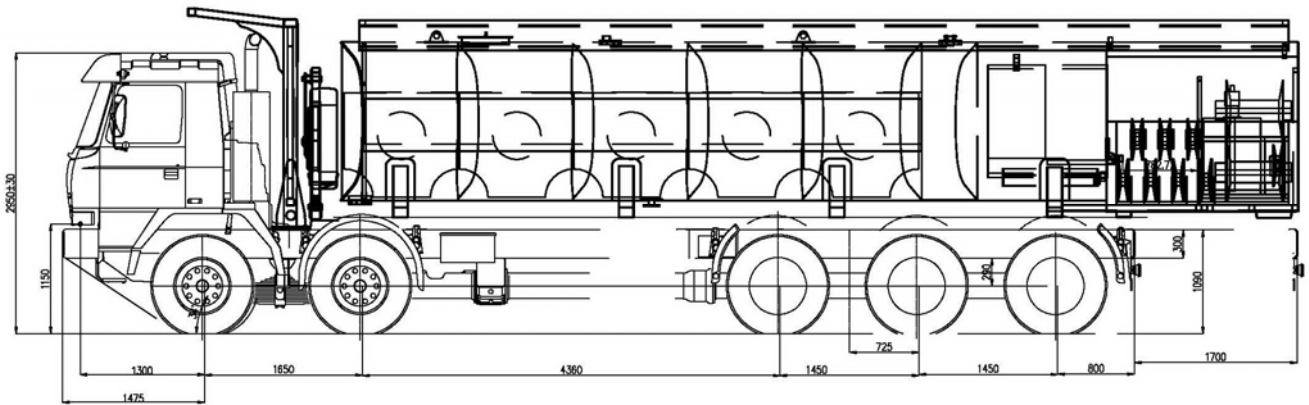
546 Boundary Road

ARCHERFIELD QLD 4108

T:(07) 3274 4666

F:(07) 3274 2411

10x10 SERVICE MODULE CSN20/7K



8x8 SERVICE MODULE CSN10/7K

This service module is designed for filling and transporting diesel and other oils, and has a maximum loading capacity of 10,000L. It has a stainless steel tank with concave baffles, and is completely insulated.

TECHNICAL DATA

Tank volume	10,000L
Cover of insulations	.06mm thick
Insulation of tank body outside (optional)	100mm
4 chambers for oil	4x 1,000L
1 chamber for waste oil	1x 1,000L
1 chamber for water	1x 1,200L
1 chamber for coolant	1x 1,000L
Body unladen weight	Approx 5,000kg

WEIGHTS

Kerb Weight	20,440 kg
Payload	21,560 kg
Total Weight	42,000 kg

DIESEL

Standard flow from 60 to 480 l/min

The discharge nozzle which comes with hydraulically wound aluminium drum hose reel (Wiggins Quick Fill), with adjustable flow rate of 60-480 l/min.

Low volume gun comes with 1" DN fitting – 15m long, automatically released pistol (flow max. 120 l/min)

Hydraulically wound aluminium drum hose reel, grip with swivel 1½" hose – 15-m long, automatically released pistol grip 1½" including a swivel joint (flow max 300 l/min)

Mechanical counter PRECIMA 500X with mechanical printer-maximum discharge capacity up to 480 l/min.

TANK EQUIPMENT

Inspection covers can be removed for inspection if required (Optional)

Foot valve DN 100

Safety valve and non-discharging valve

Sensor for bottom loading

Control of foot valves – pneumatically operation

All reels are located in the rear part of the tank body

FILLING/DISCHARGING UNIT FUNCTIONS

Bottom loading

Discharge through counter for two separate winders (Low/high flow filling)

OILS

4x 15m long reels with spring return reel

Dimension DN 20 mm (¾") with spring return reel

Pump – flow approx. from 5 – 15l/min

WASTE OILS

Reel 15m long with spring return reel

Dimension DN ½", connection only screw for ½"

Rotary Pump for empty and suction – flow approx. 20 - 100 l/min.

Has a vacuum pump capable of up to 500L/min

COOLANT

Reel 15m long with spring return reel

Pump – flow is adjustable as required

Optional flow metre gun for discharging

WATER

Hose reel 15m long-max flow is 120L/min (3 bar)

PRESSURE OPERATION GREASE

Pneumatic operation

2x Separate 200kg drums

Grease press equipment operated by pneumatic system (Auxiliary air compressor is PTO driven)

15m grease reel situated in rear part of tank body with spring return reel

ADDITIONAL EQUIPMENT

Under all reels is a drain tray that can be cleaned out with the E-Vac system

PTO driven hydraulic circuit including pump of 35L with pressure 160 bar for operation following:

- power for pump for diesel
- power for compressor (compressor has capacity – 100 PSI/approx. 8,1 bars)
- power for rotary pump for empty and suction waste oil
- power for rotary pump for discharging clean oil
- power for pump discharging coolant

Plastic mudguards

Doors – system open and door by pneumatic struts

Filter cupboards

1 x box for tools and filters

2 x Work lights in rear cabinet

4 x External working lights

1 x Earth cable – 15 m

Pressure test for the tank body from TÜV SÜD CZ s.r.o.

Operation instructions and technical instructions

Optional Telma Retarder

ROPS fitted according to standard AS 2294.2

*Drawings and more information available

*Designs can be modified to customers request

Vehicle operation can be further limited by local regulations

Manufacturer reserves the right to modify vehicles without a prior notice

www.tatratrucks.com.au

14/1/09

FROM

OFFROAD TRUCKS AUSTRALIA PTY LTD

ABN 12 091 646 481

DL 16670

HEAD OFFICE & SHOWROOM

25 Garnet Way (Cnr Eva St)

MADDINGTON WA 6109

PO Box 342

FORRESTFIELD WA 6058

T:(08) 9459 8911

F:(08) 9459 8966



E: tatra@offroadtrucks.com.au

QLD BRANCH

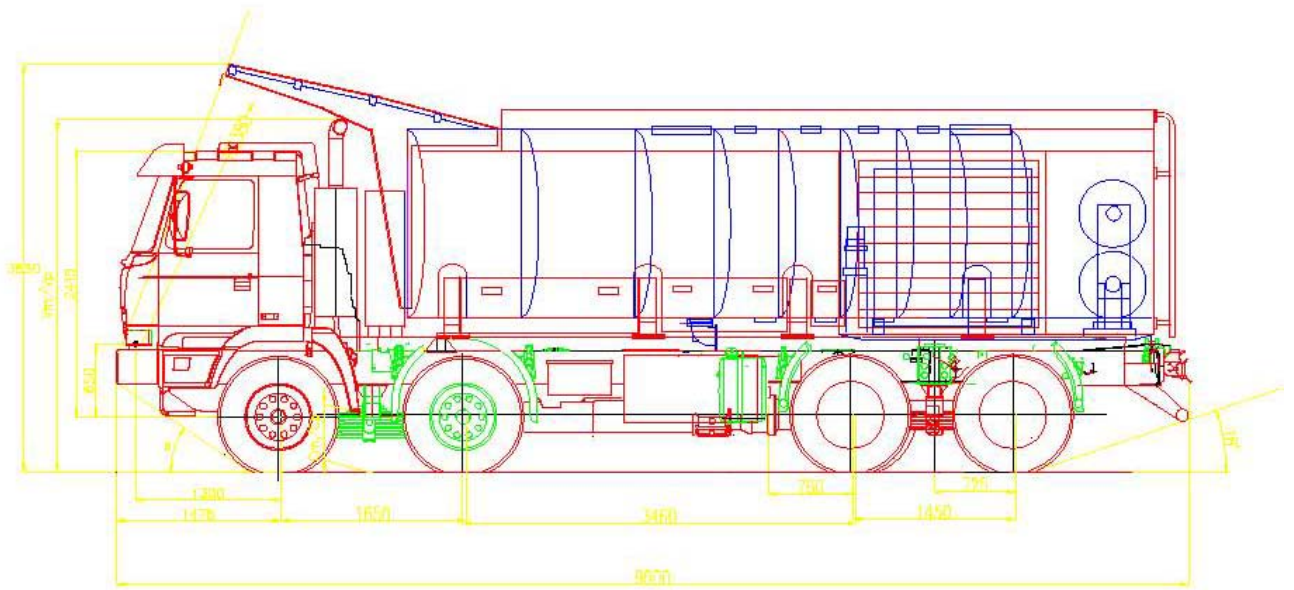
546 Boundary Road

ARCHERFIELD QLD 4108

T:(07) 3274 4666

F:(07) 3274 2411

8x8 SERVICE MODULE CSN10/7K



8x8 WATER MODULE MK 18

This 18,000L water module has been designed for transporting and re-pumping service water with the possibility of watering and sprinkling on fires. By use of the front nozzles it is possible to carry out the sprinkling and flushing of roads.

TECHNICAL DATA

Tank volume	18,000L
Stainless Steel	1.4301
Width	Approx 2,100mm
Length	Approx 6,800mm
Height	Approx 2,100mm
Weight	Approx 3,100kg
Explicit flow rate of pump	Max 1,100 l/min
Max Pressure	7-12 bar
Operation Speed (when spraying with spray bar)	2-15km/hour
Canon operated from Cab (Foam can be added for fire fighting)	
High volume discharge for transporting water	
Front and rear sprays	
Rear Dribble bar	
1 inch discharge hose at rear	
Main control panel in cabin to control spraying nozzles, beacons, spray gun, hydraulics' etc.	

DRIVE OF SUPERSTRUCTURE

Adjustable pump speed for discharge pressure and flow

ADDITIONAL EQUIPMENT

Reversing Camera (Optional)
Fire fighting hoses fitted to the rear (Optional)
Rear mud guards
Side barriers
Safety markings
Power Take off Drive
Doors – system open and door by pneumatic struts
2 x lockable boxes for hoses
2 x Work lights in rear cabinet
4 x External working lights
Pressure test for the tank body from TÜV SÜD CZ s.r.o.
Operation instructions and technical instructions
Optional Telma Retarder
ROPS fitted according to standard AS 2294.2

FILLING/DISCHARGING UNIT FUNCTIONS

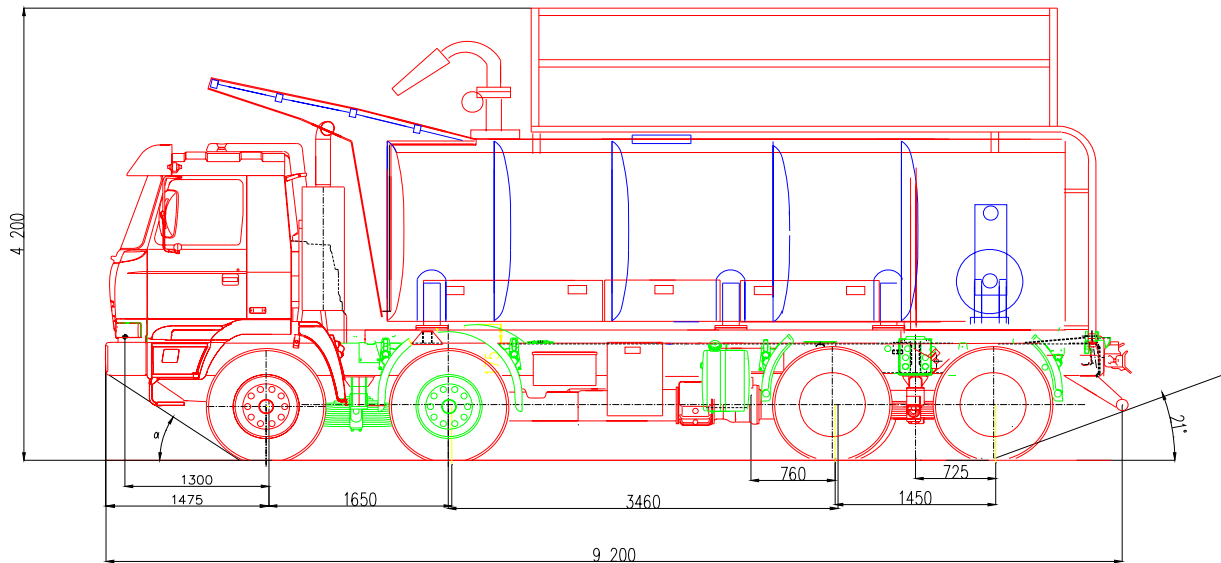
From a hydrant
From a source of pressure water through tank lid
By own pump with independent system of water incursion
Independent pump with own engine or can suck from ground level and self fill

CHASSIS REQUIREMENTS

Tatra 8x8 Short Wheel Base 22PR84/351 (3460mm wheelbase)

*Drawings and more information available

*Designs can be modified to customers request



14/1/09

FROM

OFFROAD TRUCKS AUSTRALIA PTY LTD

ABN 12 091 646 481 DL 16670

HEAD OFFICE & SHOWROOM

25 Garnet Way (Cnr Eva St)
MADDINGTON WA 6109
PO Box 342
FORRESTFIELD WA 6058
T:(08) 9459 8911
F:(08) 9459 8966



E: tatra@offroadtrucks.com.au

QLD BRANCH

546 Boundary Road
ARCHERFIELD QLD 4108

T:(07) 3274 4666
F:(07) 3274 2411

8x8 WATER MODULE MK 18



6x6 SERVICE MODULE CS-N 5K/6-0

This service module is designed for filling and transporting diesel and other oils, and has a maximum loading capacity of 5,000L. It has a stainless steel tank with concave baffles, and is completely insulated.

TECHNICAL DATA

Tank volume	5,500L
Cover of insulations	.06mm thick
Insulation of tank body outside (optional)	100mm
2 chambers for oil	2x 650L
1 chamber for oil	1x 1,000L
1 chamber for waste oil	1x 1,000L
1 chamber for coolant	1x 650L
Grease	2x 200kg
Body unladen weight	Approx 8,000kg

WEIGHTS

Kerb Weight	18,000 kg
Payload	12,000 kg
Total Weight	30,000 kg

DIESEL

Pumping information: flow from 60 to 480 l/min (High Flow) and Low flow discharge from 20 – 120 l/min

1x hydraulic return for high flow fuel reel

Mechanical counter PRECIMA 500 X with mechanical printer – maximum discharge capacity up to 480 l/min. (Optional with full electronic)

Discharge and refuelling can be done from ground level. DN 2" – connection

TANK EQUIPMENT

Inspection covers can be removed for inspection if required

Foot valve DN 100

Safety valve and non-discharging valve

Sensor for bottom loading

Control of foot valves – pneumatically operation

FILLING/DISCHARGING UNIT FUNCTIONS

Bottom loading

Discharge through counter for two separate winders (Low/high flow filling)

OILS

Reel 15m long with spring return reel

Dimension DN 20 mm (3/4") with spring return reel

Pump – flow approx. from 5 – 15l/min

WASTE OILS

Reel 15m long with spring return reel

Dimension DN 1/2", connection only screw for 1/2"

Rotary Pump for empty and suction – flow approx. 20 - 100 l/min.

Optional 1 inch suction line available with high flow pump

COOLANT

Reel 15m long with spring return reel

Pump – flow approx. From 5 – 15 l/min.

Optional flow metre for discharging

PRESSURE OPERATION GREASE

Pneumatic operation

Grease press equipment operated by pneumatic system (Auxiliary air compressor is PTO driven)

15m grease reel situated in rear part of tank body with spring return reel

DRUM WITH HOSE FOR AIR

15m retractable air reel also available (13mm)

ADDITIONAL EQUIPMENT

Under all reels is a drain tray that can be cleaned out with the E-Vac system

PTO driven hydraulic circuit including pump of 35L with pressure 160 bar for operation following:

- power for pump for diesel
- power for compressor (compressor has capacity – 100 PSI/approx. 8,1 bars)
- power for rotary pump for empty and suction waste oil
- power for rotary pump for discharging clean oil
- power for pump discharging coolant

Plastic mudguards

Doors – system open and door by pneumatic struts

1 x box for tools and filters

2 x Work lights in rear cabinet

4 x External working lights

1 x Earth cable – 15 m

Pressure test for the tank body from TÜV SÜD CZ s.r.o.

Operation instructions and technical instructions

Optional Telma Retarder

*Drawings and more information available

*Designs can be modified to customers request

Vehicle operation can be further limited by local regulations

Manufacturer reserves the right to modify vehicles without a prior notice

www.tatratrucks.com.au

14/1/09

FROM

OFFROAD TRUCKS AUSTRALIA PTY LTD

ABN 12 091 646 481 DL 16670

HEAD OFFICE & SHOWROOM

25 Garnet Way (Cnr Eva St)

MADDINGTON WA 6109

PO Box 342

FORRESTFIELD WA 6058

T:(08) 9459 8911

F:(08) 9459 8966



E: tatra@offroadtrucks.com.au

QLD BRANCH

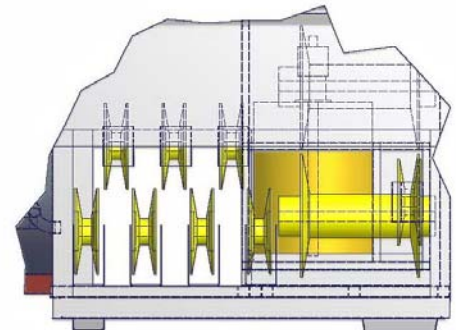
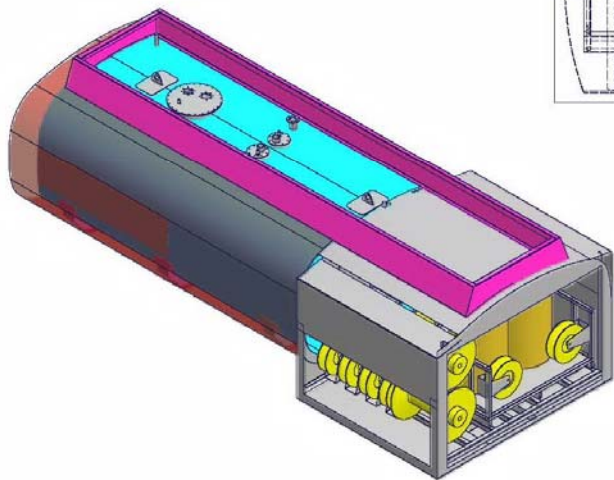
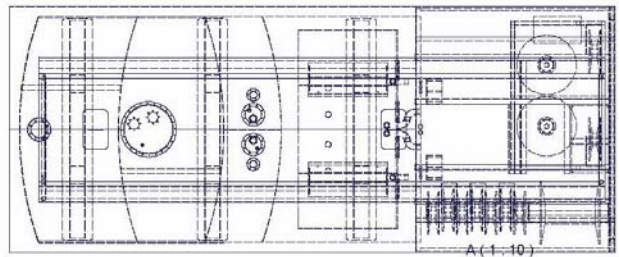
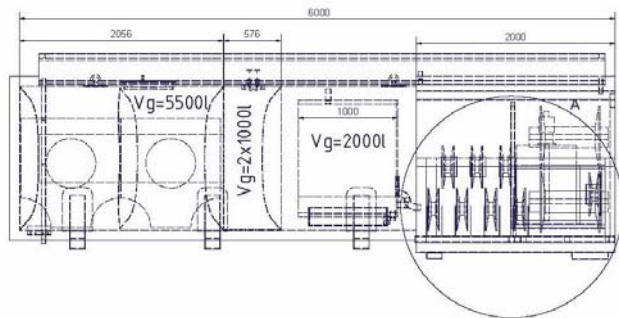
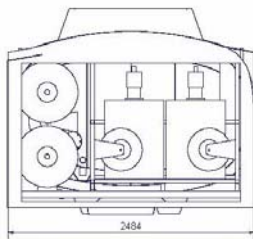
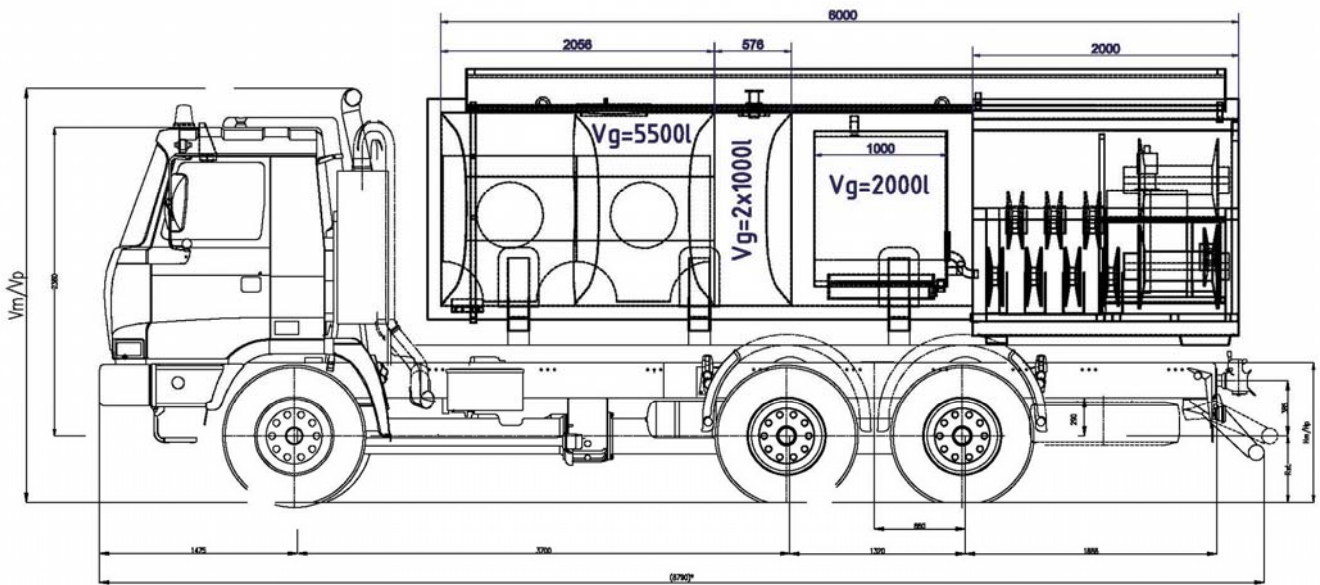
546 Boundary Road

ARCHERFIELD QLD 4108

T:(07) 3274 4666

F:(07) 3274 2411

6x6 SERVICE MODULE CS-N 5K/6-0



HEAD OFFICE
National Sales

25 Garnet Way, Maddington WA 6109
PO Box 342, Forrestfield WA 6058
T: +61 8 9459 8911
F: +61 8 9459 8966
tatra@offroadtrucks.com.au

QLD BRANCH

546 Boundary Road, Archerfield QLD 4108
T: +61 7 3274 4666
F: +61 7 3274 2411